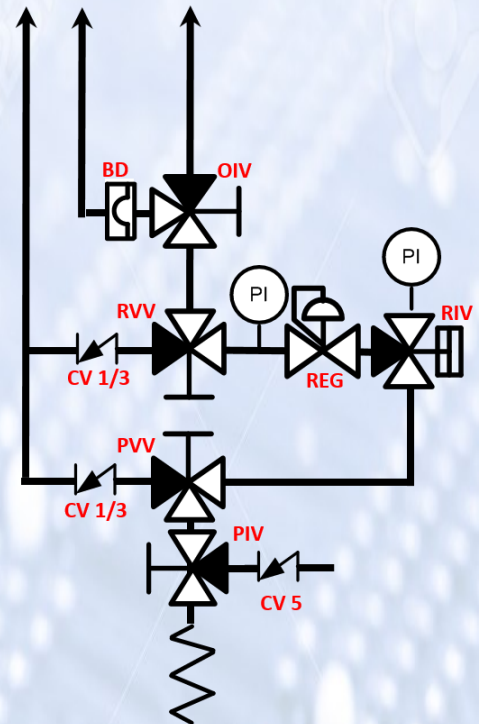


Vanguard Series 5V-M-PEO

Features:

- Modular design** allows for later upgrade.
- Easy Maintenance** all components and inter-connecting pipework removable from the front.
- Full flow Path** eliminates dead space to a minimum.
- Springless Valves** reduce particle generation.
- Tied Diaphragm Regulator** provides positive shutoff.
- Air Operated RIV** with manual override for Regulator protection during purging
- Manual PVV** for cylinder exchange purging c/w non-return valve
- Manual PIV** for purge gas introduction c/w non-return valve
- Manual RVV** for regulator and line purging c/w non-return valve
- Manual OIV** for gas panel outlet isolation
- LOTO** on manual valves for safe maintenance.
- Burst Disc (10 bar +/- 10%)** for overpressure safety relief

All components of 316L material with PCTFE soft goods (VespeI® available as option)
 Hastelloy trim regulators available for Corrosive gases
 All tubing orbitally welded



DESIGN STANDARDS

- Conforms to Pressure Equipment Directive (PED) 2014/68/EU
- Helium Leak Tested to 2×10^{-9} atm-cm³/sec
- Conforms to SEMI S2 standards
- Maximum inlet pressure 3500 psig (238 bar g)
- Maximum outlet pressure 100 psig (6.8 bar g)
 (250 psig (17 bar g) available on request)



Additional Enhancements

Cylinder gauge to Transducer

Allows for Low cylinder alarm when used in conjunction with the GCT4-S controller.

Outlet gauge to transducer

Allows for High Outlet Pressure shutdown alarm when used in conjunction with the GCT4-S controller

Burst Disc Monitoring

Allows for monitoring of Burst disc failure shutdown alarm preventing loss of costly process gas when used in conjunction with the GCT4-S controller

Manual High Pressure Leak Test Valve with LOTO

Allows for leak testing of cylinder connection and gas panel

Manual Process Line Isolation Valve with LOTO

Allows for isolation of gas panel from process gas line for leak testing of gas panel and maintenance

Ordering information

5V - M - PEO - XXX - XX - XX - XXX - XXX - XXX

Base Model

Regulator

TD = Tied Diaphragm Stainless
 TDH = Tied diaphragm Hastelloy
 DS = Dual stage
 TDV = Tied diaphragm Vespel Seat

Inlet Sensor

10 = 0-1000 gauge
 30 = 0-3000 gauge
 XD = Transducer

Outlet Sensor

1 = 30-0-160 gauge
 XD = Transducer

Option 1

BDM = Burst Disc Monitoring
 LTV = Leak Test Valve
 PLI = Process Line Isolation Valve

Option 3

BDM = Burst Disc Monitoring
 LTV = Leak Test Valve
 PLI = Process Line Isolation Valve

Option 2

BDM = Burst Disc Monitoring
 LTV = Leak Test Valve
 PLI = Process Line Isolation Valve